



PICTURED: PACJS250

## PORTACOOOL JETSTREAM™ SERIES

A COMPLETE SERIES OF EVAPORATIVE COOLERS TO UP THE COOLING ANTE

Product	Cooling (sq. ft.)	CFM	Velocity (mph)	Water (G)	Fan Blade (in)	AMPS	Speeds	Dimensions H X W X D
PACJS270	5,625	22,500	26	65	48	15.2	Variable	90 x 78 x 36
PACJS260	3,125	12,500	25	60	36	9.3	Variable	77 x 63 x 30
PACJS250	2,125	8,500	24	55	24	6.6	Variable	70 x 52 x 30
PACJS240	1,125	4,500	29	50	16	8.3	Variable	59 x 40 x 24
PACJS230	900	3,600	27	30	N/A	8.3	Variable	50 x 29 x 27
PACJS220	700	2,400	30	20	N/A	3.4	Variable	42 x 29 x 27

## PORTACOOOL HAZARDOUS LOCATION™ SERIES

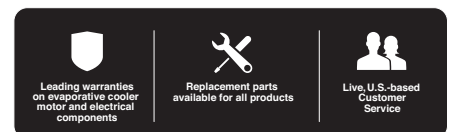
EXTRAORDINARY COOLING FOR CHALLENGING ENVIRONMENTS

Product	Cooling (sq. ft.)	CFM	Velocity (mph)	Water (G)	Fan Blade (in)	AMPS	Speeds	Dimensions H X W X D
PACHZ270	5,625	22,500	20	65	48	19.8	One	90 x 77 x 35
PACHZ260	3,125	12,500	18	45	36	14.8	One	78 x 63 x 29

\* Standard 115v; Available in 220v

### Kuul Comfort™ evaporative media

Kuul Comfort™ evaporative media is the only evaporative cooling media manufactured in the USA. It is designed to the exact performance requirements of Portacool portable evaporative coolers.



[WWW.PORTACOOOL.COM](http://WWW.PORTACOOOL.COM)



3 year warranty on Jetstream and Hazardous Location series

## HOW DO WE COMPARE?

### FANS

Fans only move hot, stagnant air around and can actually make you hotter!



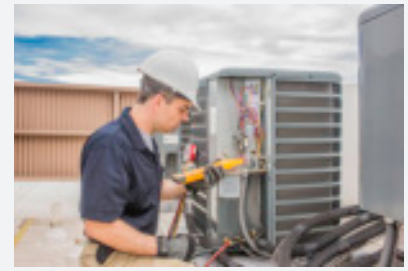
### MISTERS

Misters/atomizers add moisture into your shop and can create slip/fall hazards.



### A/C

Purchase, installation, monthly utility and maintenance costs are often prohibitive.



**PORTACOOOL PARTS AND ACCESSORIES ARE AVAILABLE ONLINE  
AT [SHOP.PORTACOOOL.COM](http://SHOP.PORTACOOOL.COM)  
OR THROUGH YOUR LOCAL DISTRIBUTOR OR RETAIL LOCATION**

## HEAT STRESS AWARENESS

According to the National Weather Service, heat is the weather event that produces the greatest number of fatalities (ahead of flooding and tornado) each year.

In addition, excessive heat could cost you big bucks! With a staff of 100 employees, one extra 15 minute break a day during the summer could cost you 2,250 HOURS of lost labor!

### HEAT INDEX CHART

Air Temp	70°	75°	80°	85°	90°	95°	100°	105°	110°
Relative Humidity ↓	Apparent Temperature (F°) →								
0%	67°	72°	78°	80°	84°	87°	91°	95°	99°
10%	67°	73°	78°	81°	85°	89°	94°	99°	104°
20%	68°	73°	79°	82°	86°	91°	97°	104°	112°
30%	68°	74°	79°	83°	88°	94°	102°	112°	122°
40%	69°	74°	80°	84°	91°	99°	109°	121°	136°
50%	69°	75°	81°	86°	95°	105°	118°	134°	152°
60%	70°	75°	82°	89°	100°	113°	129°	149°	-
70%	70°	75°	83°	93°	106°	123°	143°	-	-
80%	70°	76°	84°	97°	113°	134°	-	-	-
90%	71°	76°	86°	102°	122°	147°	-	-	-
100%	71°	77°	89°	108°	132°	-	-	-	-

- CAUTION
- EXTREME CAUTION
- DANGER
- EXTREME DANGER