

PORTACOOOL®



**PORTACOOOL PORTABLE
EVAPORATIVE COOLERS**

KUUL CONTROL COMFORT™ EVAPORATIVE MEDIA

WHAT IS EVAPORATIVE MEDIA?

Evaporative media is the technology at the center of evaporative cooling. This is what allows water to interact with the air. As air and water meet in the media, evaporation occurs.

- **Kuul Comfort™ evaporative media is designed and made exclusively to meet the exact performance requirements of Portacool portable evaporative coolers.**
- **Our media features an exclusive mix of superior raw materials and a proprietary application of geometrical, intelligent design to create the optimal cooling experience.**
- **Kuul Comfort evaporative media is the driving force behind our superior cooling performance.**

For portable evaporative coolers at high air flow velocity, Kuul Comfort™ evaporative media meets efficiency standards and exceeds pressure drop requirements. Not only does Kuul evaporative media last longer, but ensures the portable cooler remains operational at high efficiency for on demand cooling when it is needed most. Effective, clean cooling, stronger, and longer lasting evaporative media with low pressure drop for the lowest total cost of ownership.



WHY KUUL COMFORT™ PERFORMANCE MAKES A DIFFERENCE

- **Provides the cooling performance when you need it most, reliably ensuring higher average air mass-flow through the cooler.**
- **Much lower air-pressure drop allows for greater ventilation rates with less induction air pressure through media. This means higher cooler efficiency and greater mass transfer of air, providing The Kuul Effect™.**
- **Cleaner air delivery due to the air scrubbing and filtration capabilities of Kuul media when in use. The media scrubs dust and impurities in the air, washing the waste particles into the sump for later disposal.**
- **The strongest media in the industry lasts much longer than other brands allowing more years of service before the need for replacement.**

HOW THE KUUL EFFECT FEELS

WARM AND HUMID

REAL TEMPERATURE
80°F

HUMIDITY
60%

EXPECTED TEMPERATURE*
69°F

WARM AND DRY

REAL TEMPERATURE
90°F

HUMIDITY
20%

EXPECTED TEMPERATURE*
76°F

HOT AND DRY

REAL TEMPERATURE
105°F

HUMIDITY
20%

EXPECTED TEMPERATURE*
85°F

HOT AND HUMID

REAL TEMPERATURE
95°F

HUMIDITY
55%

EXPECTED TEMPERATURE*
82°F

* The temperature drop provided only reflects the performance of Portacool's Kuul Comfort™ evaporative media. The drop does not factor in the velocity or volume of the air provided by our high-performance fans (wind chill). The "real-feel" or perceived temperature will be cooler. Results will vary based on your current conditions.

WHY SHOULD COOLING MATTER TO YOU?

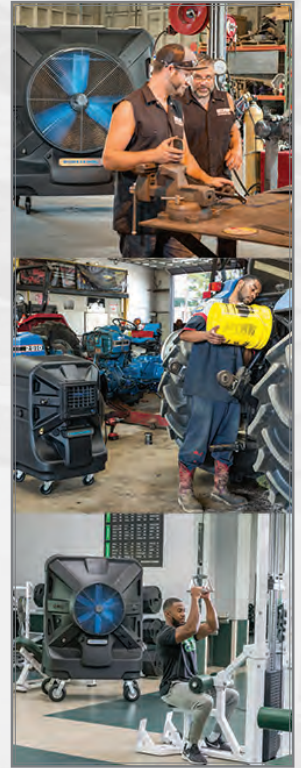
Recently OSHA has enacted HIPP (Heat Illness Prevention Program) – a safety and health program consisting of seven core elements

1. Management Leadership
2. Worker Participation
3. Hazard Identification
4. Assessment
5. Education and Training
6. Program Evaluation
7. Improvement

Under HIPP, employers **MUST**

- a. Provide “Fresh, Pure, and Suitably Cool” water free of charge
- b. Allow employees to take a 10 minute cool down rest period **WHENEVER** they feel heat stress
- c. Have Emergency Response Procedures

If you live in a state that does not have HIPP you cannot simply ignore heat safety. Businesses in all states can be fined for heat stress non-compliance through I2P2 or IIPP (Injury Illness and Prevention Program).



MANY STATES HAVE BOTH IIPP AND HIPP. ARE YOU COMPLIANT?

IN CALIFORNIA, THE INITIAL PENALTY FOR BUSINESSES FOUND TO BE OUT OF COMPLIANCE WAS BETWEEN \$7,000 AND \$12,000.
FAILURE TO ABATE OR FIX THE ISSUE RESULTS IN A \$15,000 PER DAY FINE.

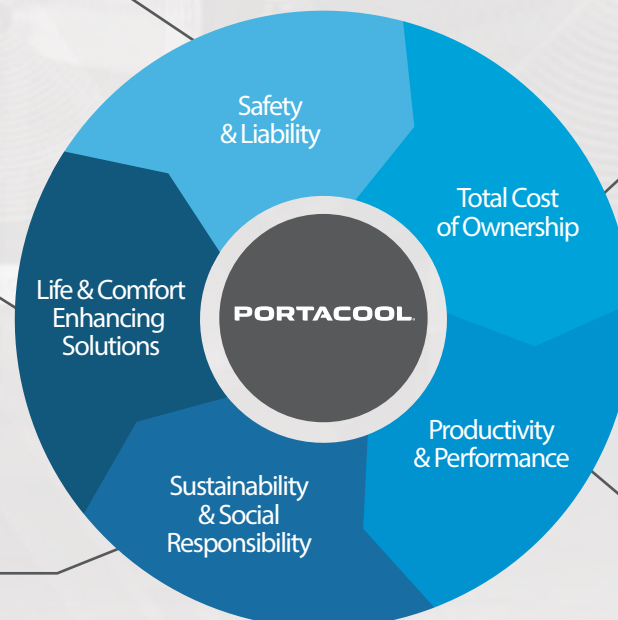
THE FIVE BRAND PILLARS

Portacool stands for **VALUE** in 5 different, but interconnected ways.

The value of reducing injuries and illness that go up—along with legal/insurance costs—when heat conditions reach certain levels.

The value of enhancing comfort for life's important moments, tasks, & events.

The value evaporative cooling provides as an alternative cooling method to ones that may be environmentally damaging by using Freon, increased electric consumption and a myriad of manufacturing bi-products created and requiring disposal.



Safety
& Liability

Total Cost
of Ownership

Productivity
& Performance

Sustainability
& Social
Responsibility

Life & Comfort
Enhancing
Solutions

The value evaporative cooling provides as the lowest cost of cooling available, the quality of workmanship/components that go into a Portacool product, its' durability and the low cost of operation/minimal infrastructure required. *It also represents the intangible value of comfort at home, work or away.*

The value of maintaining quality of work and performance when heat takes its toll on workers.

QUICK REFERENCE



PORTACOOOL JETSTREAM™ SERIES

A COMPLETE SERIES OF EVAPORATIVE COOLERS TO UP THE COOLING ANTE

| Product | Cooling (sq. ft.) | CFM | Velocity (mph) | Water (G) | Fan Blade (in) | AMPS | Speeds | Dimensions H X W X D |
|--------------|-------------------|--------|----------------|-----------|----------------|------|----------|----------------------|
| PACJS2701A1* | 5,625 | 22,500 | 26 | 65 | 48 | 15.2 | Variable | 90 x 78 x 36 |
| PACJS2601A1 | 3,125 | 12,500 | 25 | 60 | 36 | 9.3 | Variable | 77 x 63 x 30 |
| PACJS2501A1 | 2,125 | 8,500 | 24 | 55 | 24 | 6.6 | Variable | 70 x 52 x 30 |
| PACJS2301A1 | 900 | 3,600 | 27 | 30 | N/A | 8.3 | Variable | 50 x 29 x 27 |
| PACJS2201A1 | 700 | 2,400 | 30 | 20 | N/A | 3.4 | Variable | 42 x 29 x 27 |

* The Jetstream 270, PACJS2701A1, requires a 20 amp outlet

PORTACOOOL HAZARDOUS LOCATION™ SERIES

EXTRAORDINARY COOLING FOR CHALLENGING ENVIRONMENTS

| Product | Cooling (sq. ft.) | CFM | Velocity (mph) | Water (G) | Fan Blade (in) | AMPS | Speeds | Dimensions H X W X D |
|--------------|-------------------|--------|----------------|-----------|----------------|------|--------|----------------------|
| PACHZ270DAZ* | 5,625 | 22,500 | 20 | 65 | 48 | 19.8 | One | 90 x 77 x 35 |
| PACHZ260DAZ* | 3,125 | 12,500 | 18 | 45 | 36 | 14.8 | One | 78 x 63 x 29 |

* Standard 115v; Available in 220v

PORTACOOOL JETSTREAM™ SERIES

3

Year warranty on motor and electrical components

∞

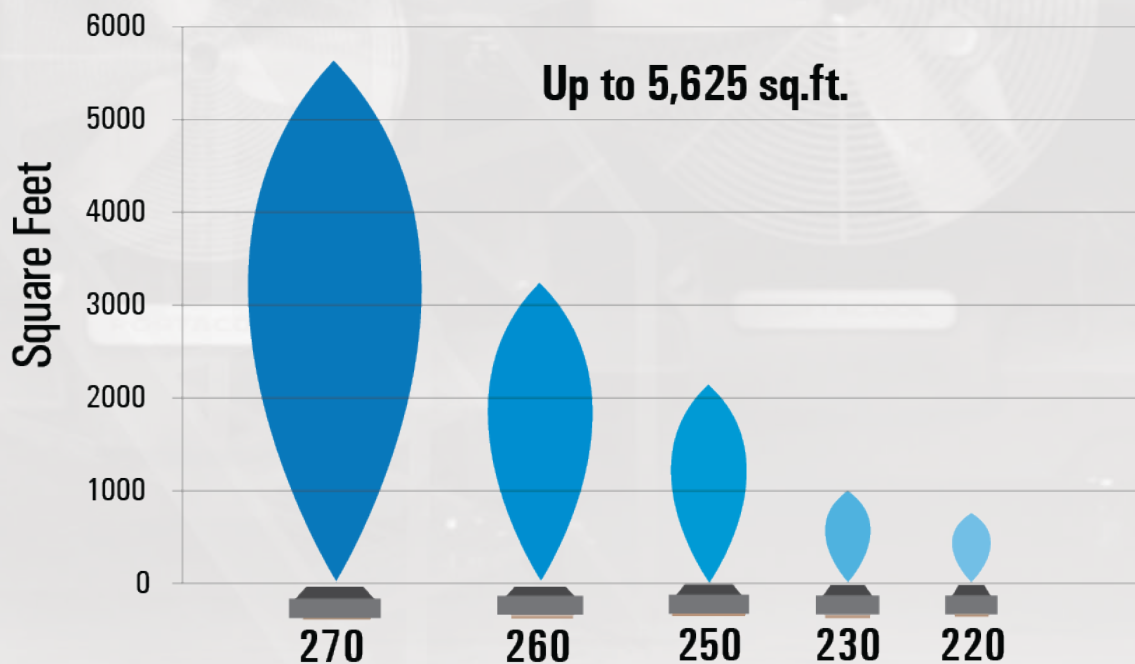
Lifetime warranty on all molded housings

FEATURES

- Molded in handles
- Liquid Level Indicator
- Low water shut off
- One piece housing
- Dual water fill
- Extra large drain
- ELCI/GFCI plug



AIRFLOW PATTERN





BIG COOLING FOR EVEN THE SMALLEST SPACES

JETSTREAM 220

| | |
|---------------------|--------------------------------------|
| Air delivery | 2,400 CFM / 4,078 m ³ /hr |
| Velocity | 30 mph / 48 kph |
| Amps | 3.4 |
| Speeds | Variable |
| Fan blade size | Centrifugal fan |
| Cooling capacity | 700 s.f. / 65 m ² |
| Water reservoir | 20 G / 76 L |
| Dimensions (inches) | 42 H x 29 W x 27 D |
| Dimensions (cm) | 107 H x 74 W x 69 D |
| Weight | 87 lb / 39 kg |
| Decibel level | High - 68 / Low - 62 |
| Stock Number | PACJS220 |



*Standard 115v

JETSTREAM 230



| | |
|-----------------------|--------------------------------------|
| Air delivery | 3,600 CFM / 6,116 m ³ /hr |
| Velocity | 27 mph / 43 kph |
| Amps | 8.3 |
| Speeds | Variable |
| Fan blade size | Centrifugal fan |
| Cooling capacity | 900 s.f. / 84 m ² |
| Water reservoir | 30 G / 114 L |
| Dimensions (inches) | 50 H x 29 W x 27 D |
| Dimensions (cm) | 127 H x 74 W x 69 D |
| Weight | 108 lb / 50 kg |
| Decibel level | High - 68 / Low - 62 |
| Stock Number | PACJS230 |
| National Stock Number | 4120016522094 |



JETSTREAM 250

| | |
|-----------------------|---------------------------------------|
| Air delivery | 8,500 CFM / 14,441 m ³ /hr |
| Velocity | 24 mph / 39 kph |
| Amps | 6.6 |
| Speeds | Variable |
| Fan blade size | 24 in / 60.9 cm |
| Cooling capacity | 2,125 s.f. / 197 m ² |
| Water reservoir | 55 G / 208 L |
| Dimensions (inches) | 70 H x 52 W x 30 D |
| Dimensions (cm) | 178 H x 132 W x 76 D |
| Weight | 191 lb / 87 kg |
| Decibel level | High - 78 / Low - 56 |
| Stock Number | PACJS250 |
| National Stock Number | 4120014319353 |



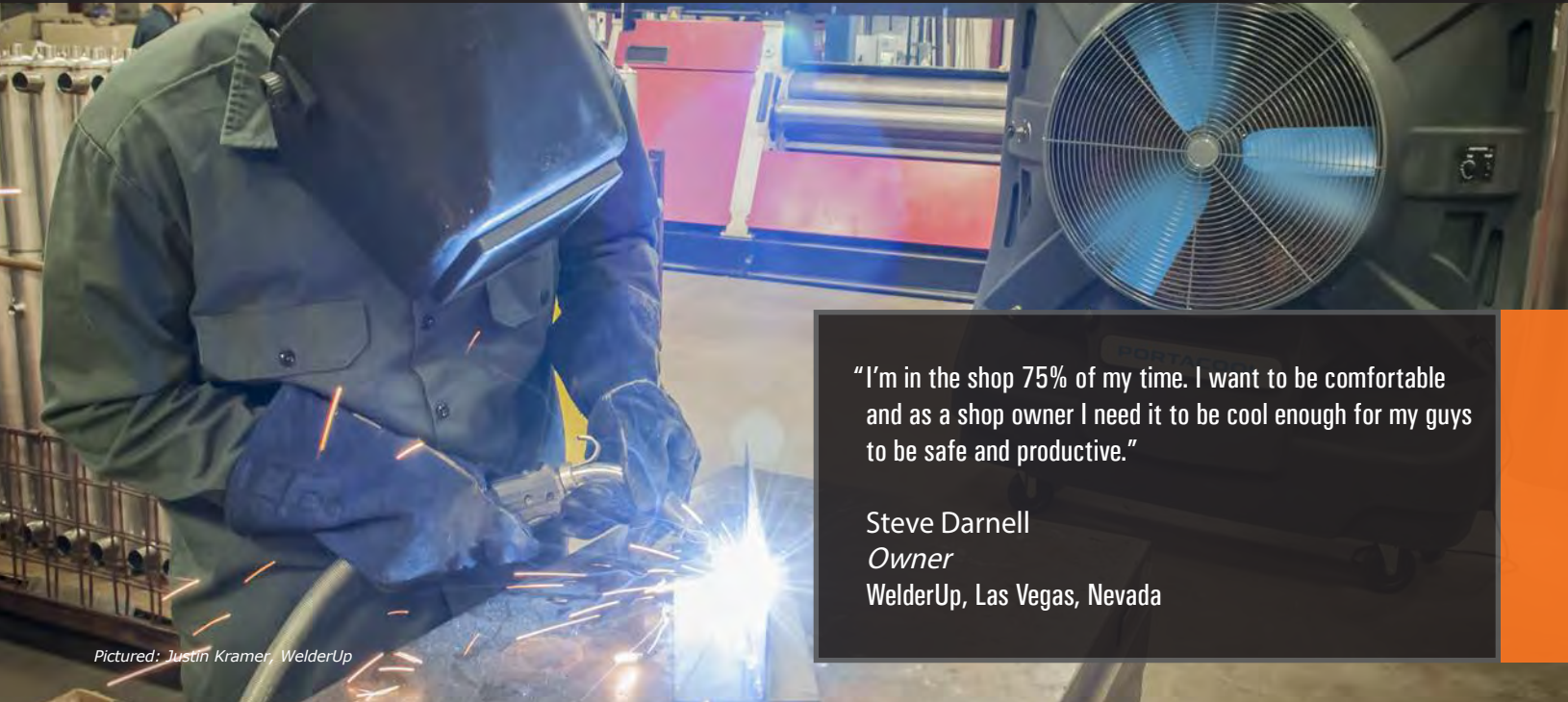
*Standard 115v

PROACTIVE MEASURES AGAINST EXCESSIVE HEAT AIDS SAFETY AND PRODUCTIVITY



Don't let the heat keep your team from reaching their full potential. Keep your athletes cool and ready to go all year long with a Portacool Evaporative Cooler! Portacool has a product that fits right into any routine or training regimen.

COOLING IS MORE THAN A LUXURY, IT CAN BE A LIFE AND DEATH MATTER



"I'm in the shop 75% of my time. I want to be comfortable and as a shop owner I need it to be cool enough for my guys to be safe and productive."

Steve Darnell
Owner
WelderUp, Las Vegas, Nevada

Pictured: Justin Kramer, WelderUp

JETSTREAM 260

| | |
|-----------------------|--|
| Air delivery | 12,500 CFM / 21,238 m ³ /hr |
| Velocity | 25 mph / 40 kph |
| Amps | 9.3 |
| Speeds | Variable |
| Fan blade size | 36 in / 91.4 cm |
| Cooling capacity | 3,125 s.f. / 290 m ² |
| Water reservoir | 60 G / 227 L |
| Dimensions (inches) | 77 H x 63 W x 30 D |
| Dimensions (cm) | 196 H x 160 W x 76 D |
| Weight | 212 lb / 96 kg |
| Decibel level | High - 78 / Low - 65 |
| Stock Number | PACJS260 |
| National Stock Number | 4120013933717 |



*Standard 115v

JETSTREAM 270

| | |
|-----------------------|--|
| Air delivery | 22,500 CFM / 38,228 m ³ /hr |
| Velocity | 26 mph / 42 kph |
| Amps | 15.2 |
| Speeds | Variable |
| Fan blade size | 48 in / 121.9 cm |
| Cooling capacity | 5,625 s.f. / 523 m ² |
| Water reservoir | 65 G / 246 L |
| Dimensions (inches) | 90 H x 78 W x 36 D |
| Dimensions (cm) | 229 H x 198 W x 91 D |
| Weight | 278 lb / 126 kg |
| Decibel level | High - 80 / Low - 58 |
| Stock Number | PACJS270 |
| National Stock Number | 4120014816048 |



*Standard 115v with 20 amp plug

COMFORTABLE EMPLOYEES ARE PRODUCTIVE EMPLOYEES



"June through August is a killer. It regularly gets up to 112°F. Not to mention we are welding and fabricating, and there is a furnace out back. Heat is our enemy. Portacool is our help!"

Jonathan Elkins
Owner
North County Springs, Escondido, California

APPLICATIONS

- Petrochemical refineries
- Offshore and onshore oil/gas
- Chemical production
- Fuel depots
- Fertilizer plants

ETL HAZARDOUS LOCATION,
CLASS 1, DIVISION 2,
GROUP C & D CERTIFIED

*Standard 115v



| | |
|--|--|
| 3 Year warranty on motor and electrical components | ∞ Lifetime warranty on all molded housings |
|--|--|



HAZARDOUS 260



HAZARDOUS 270

| | | |
|-----------------------|--|--|
| Air delivery | 12,500 CFM / 21,238 m ³ /hr | 22,500 CFM / 38,228 m ³ /hr |
| Velocity | 18 mph / 29 kph | 20 mph / 32 kph |
| Amps | 15.5 | 19.8 |
| Speeds | One | One |
| Fan blade size | 36 inches | 48 inches |
| Cooling capacity | 3,125 s.f. / 290 m ² | 5,625 s.f. / 523 m ² |
| Water reservoir | 45 G / 170 L | 65 G / 246 L |
| Dimensions (inches) | 78 H x 63 W x 29 D | 90 H x 77 W x 35 D |
| Dimensions (cm) | 198 H x 160 W x 74 D | 229 H x 196 W x 89 D |
| Weight | 302 lb / 137 kg | 357 lb / 162 kg |
| Decibel level | 73 | 75 |
| Stock Number | PACHZ260 | PACHZ270 |
| National Stock Number | 4120014333409 | 4120014973032 |

REPLACEMENT PARTS

| Product | Covers | Motor | Pump | Media | Casters | Controls |
|-------------|--------------|--------------|--------------|--------------|--------------|--------------|
| PACHR3701F1 | PARCVRH37000 | PARMTRH3700A | PARPMP01620B | PARKULH37000 | PARCSTH370F0 | PARCTLH00000 |
| PACHR3601A1 | PARCVRH36000 | PARMTRH3600A | PARPMP01640A | PARKULH36000 | PARCSTH360F0 | PARCTLH00000 |
| PACJS2701A1 | PARCVRJ27000 | PARMTRJ2700A | PARPMP01710A | PARKULJ27000 | PARPACCST800 | PARCTLJ27000 |
| PACJS2601A1 | PARCVRJ26000 | PARMTRJ2600A | PARPMP01710A | PARKULJ26000 | PARPACCST600 | PARCTLJ26000 |
| PACJS2501A1 | PARCVRJ25000 | PARMTRJ2500A | PARPMP01710A | PARKULJ25000 | PARPACCST600 | PARCTLJ25000 |
| PACJS2401A1 | PARCVRJ24000 | PARFANJ240F0 | PARPMP00060A | PARKULJ24000 | PARPACCST400 | PARCTLJ24000 |
| PACJS2301A1 | PARCVRJ23000 | PARFANJ230F0 | PARPMP00060A | PARKULJ23000 | PARPACCST310 | PARCTLJ23000 |
| PACJS2201A1 | PARCVRJ22000 | PARFANJ220F0 | PARPMP00060A | PARKULJ22000 | PARPACCST310 | PARCTLJ22000 |

DON'T SEE WHAT YOU ARE LOOKING FOR?
MORE PORTACOOOL PARTS AND ACCESSORIES ARE AVAILABLE
THROUGH YOUR LOCAL DISTRIBUTOR OR RETAIL LOCATION

ACCESSORIES

Rough Terrain Caster Kit

- 8" wheels
- Built for easy movement on rough terrain
- Compatible with Jestream 220, 230, 250, 260, 270 and Hazardous Location 260, 270



Set of 4
PARPACCST700

Portacool Hard Water Treatment

If your water has a high content of minerals, calcium, or lime, Portacool sells a Hard Water Treatment that keeps minerals present in your water supply off of your Kuul Comfort evaporative media. It can help to increase cooling efficiency, remove and inhibit scale build up, reduce equipment corrosion, and extend evaporative media life.

- Removes and inhibits scale build up
- Increases cooling efficiency
- Reduces equipment corrosion
- Extends evaporative media life



Pack of 4
PARPACHWTB00

Covers

- Available in black only
- Constructed for longevity - made of durable, high-quality vinyl
- Protection - keep Portacool products clean and dust-free



All cover part numbers listed above

FREQUENTLY ASKED QUESTIONS

How do I maintain my Portacool evaporative cooler?

To keep your Portacool evaporative cooler running smoothly for many years, we recommend daily and weekly maintenance. Each day you run the cooler, the pump should be turned off approximately 15 minutes before the fan is shut off to allow the media to dry completely. Weekly, we recommend shutting down the cooler, disconnecting from the power source, and draining the water tank. Once the tank is empty, the Kuul evaporative media can be removed to clean the tank and inside the cooler.

Can the fan and pump operate separately?

Yes, the fan and pump motors are separate systems. You can run one without the other with no damage to the product. That said, you will not receive the same degree of cooling by only running the fan. For evaporative cooling to occur, water must be running over the evaporative media.

What happens if my evaporative cooler runs out of water?

All Portacool evaporative coolers come with automatic low water shut-off. When the evaporative cooler is out of water, a red light will illuminate on the control panel and the pump will shut off.

Will I need a special plug for my Portacool evaporative cooler?

All Portacool evaporative coolers require a standard three-prong 115v electrical outlet, except the Portacool Jetstream 270 (115v, 20 amp plug required). Portacool Hazardous Location 270 & 260 must be hard-wired by a certified electrician.

What is the warranty on my Portacool evaporative cooler?

All Portacool evaporative coolers come with Portacool Protect™. See your products' Owner's Manual for exact warranty information. Or visit, <https://portacool.com/warranty/>.

Do evaporative coolers work in humid environments?

While evaporative coolers achieve significant temperature drops in more arid climates and drier spaces, they can provide relief from the heat in any climate due to the advancements in evaporative cooling technology. Even in hot and humid areas, you can still expect to receive cool, comfortable air.

How much moisture will an evaporative cooler add to the environment?

Multiple factors can affect exactly how much humidity and moisture evaporative cooling contributes to an environment. An increase in humidity of approximately two to five percent is produced depending on the temperature and humidity of the environment. This increase is not noticeable in a ventilated area where the air produced by the cooler is exhausted. When properly ventilated, an evaporative cooler will not cause condensation or rust.

Can I use the cooler outside?

Evaporative coolers are designed to work best in areas not easily cooled by traditional air conditioning, so outside is an excellent environment!

Do I need a constant hose connection?

All Portacool products come with both a fill tank and hose connector, with the exception of the Portacool 510. This gives you the option to keep a hose connected or manually fill the tank. Along with these features, Portacool products also come equipped with automatic low water shut-off. When the evaporative cooler is out of water, a red light will illuminate on the control panel and the pump will shut off.

What can I expect in a temperature difference?

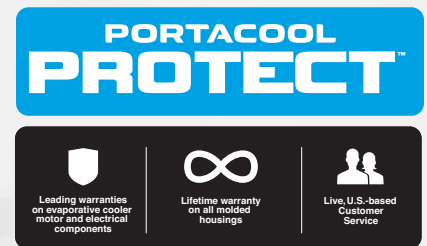
Portacool evaporative coolers CAN drop the air temperature up to 30°F when the air is very dry and where relative humidity can be 30% or less. Even in humid climates our products can still easily produce a significant temperature change.

How long will my Kuul media last?

Depending on the quality of maintenance and water, Kuul evaporative media typically last 5 years or more.

Will I get wet? Does the product mist?

Portacool evaporative coolers are not misting fans, so there should be no water coming out of the product. The products do use water, but the process of evaporation produces cooler air without a mist, so you won't get wet. A small amount of humidity is added to the air, but with proper ventilation, it is not noticeable and will not cause rust formation on equipment.



NEED MORE INFORMATION?

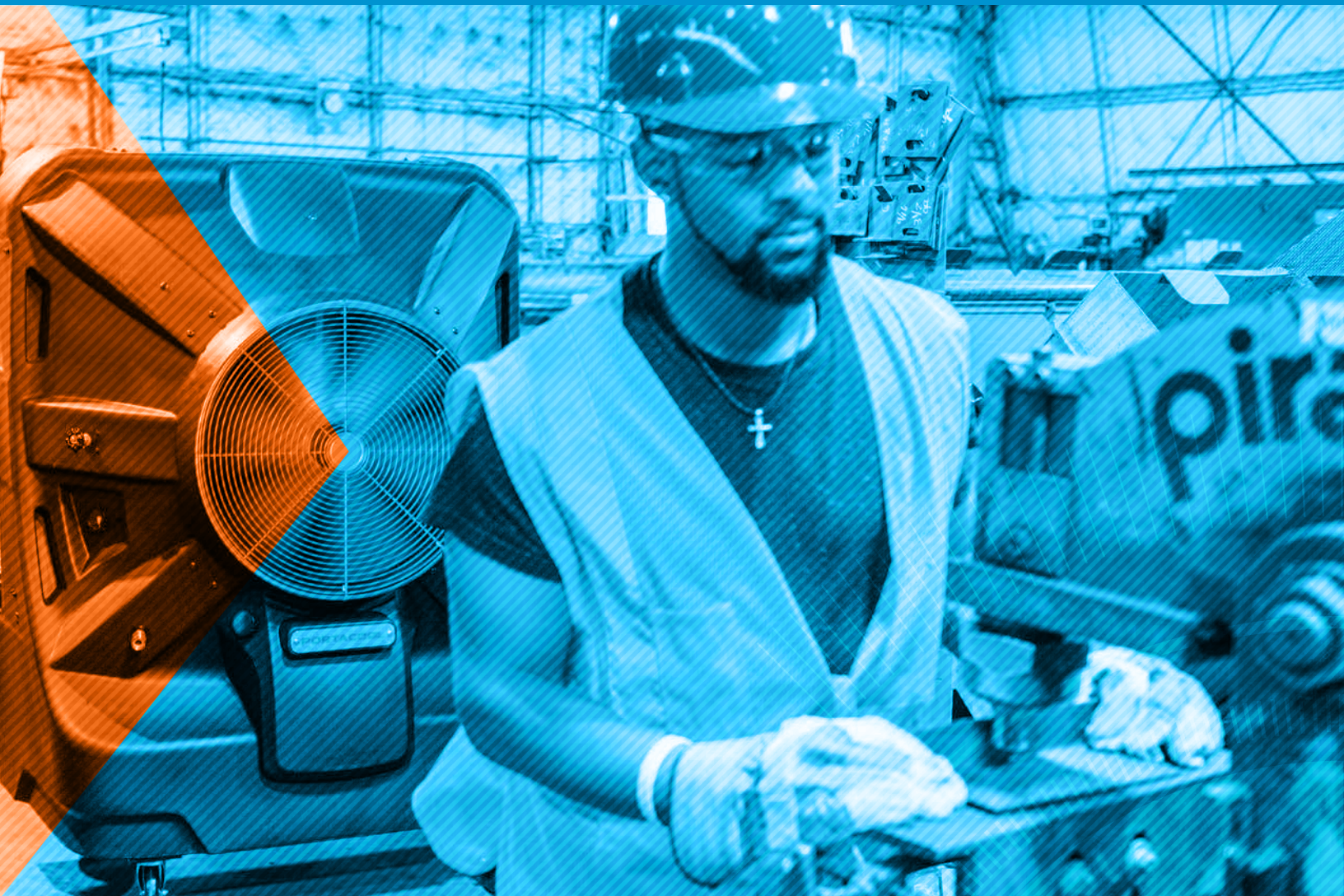
Find more information about Portacool online at
www.portacool.com

- Keep up-to-date on new product releases
- See enhanced product content
- Find distributors and rental locations
- Download literature
- Order replacement parts and accessories
- Read customer testimonials
- Watch Portacool-related videos



PORTACOOOL®

THE HOME OF KUUL™



VISIT PORTACOOOL.COM
OR CALL 936-598-5651
FOR MORE INFORMATION

PORTACOOOL PARTS AND ACCESSORIES ARE AVAILABLE ONLINE
AT PORTACOOOL.COM
OR THROUGH YOUR LOCAL DISTRIBUTOR OR RETAIL LOCATION



POWERED BY

KUUL

EVAPORATIVE TECHNOLOGIES

MADE IN USA
WITH DOMESTIC AND GLOBAL PARTS

PARMKTLT300 Updated 12/22/22